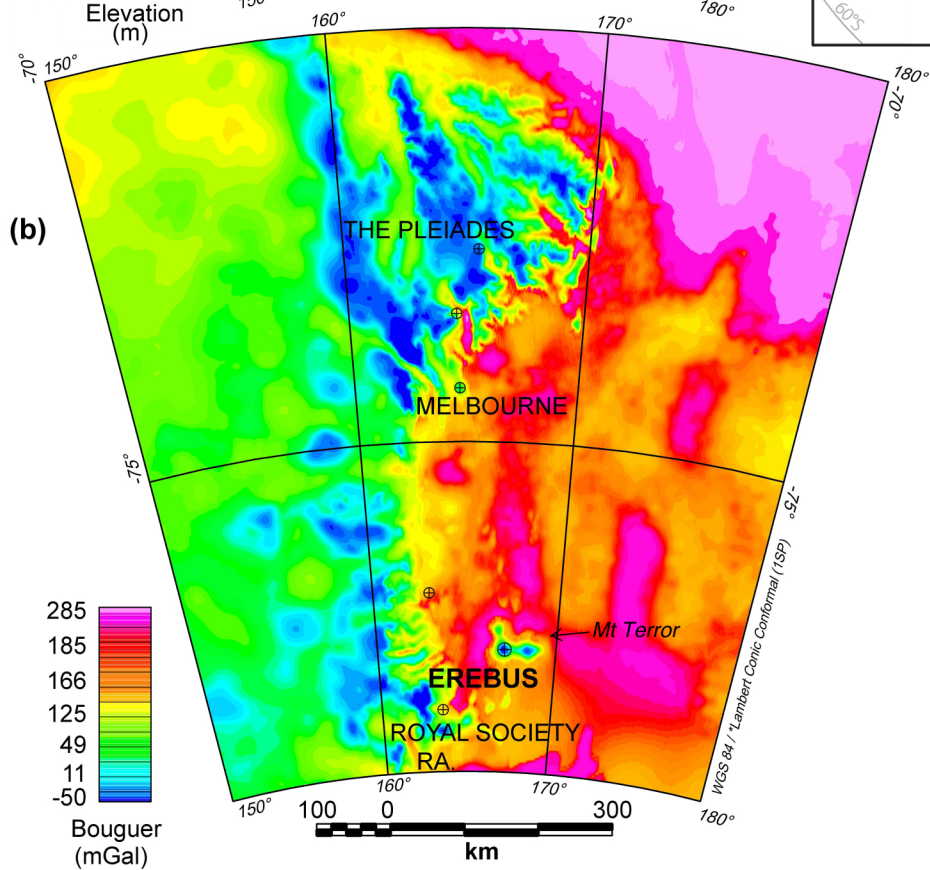


⊕ Holocene volcano



Supplementary Hi 05 Elevation and Bouguer gravity images of the Mount Erebus volcano (Ross Island) and surrounds, Antarctica. This active volcano and the neighbouring (inactive) Mount Terror volcano (and 2 smaller inactive volcanoes on Ross Island) are interpreted to overlie the Mount Erebus hotspot (see text of main article).

- (a) Enhanced digital elevation model (from ETOPO1 topography data downloaded from the Bureau Gravimétrique International).
- (b) Bouguer gravity anomalies (prepared using WGM2012 bouguer gravity data downloaded from the Bureau Gravimétrique International). Note that Mt. Erebus & Mt. Terror correspond to Bouguer gravity lows within a gravity high, similar to Iceland (see text of main article).

Insert = location map, modified after linework from the Scientific Committee on Antarctic Research (SCAR) Antarctic Digital Database.