

**Palynostratigraphy and vegetation history of the Triassic–Jurassic transition in
East Greenland**

LUKE MANDER, WOLFRAM M. KÜRSCHNER & JENNIFER C. McELWAIN

Supplementary material

Plates of selected sporomorphs recovered from Astartekløft and a full pollen diagram.

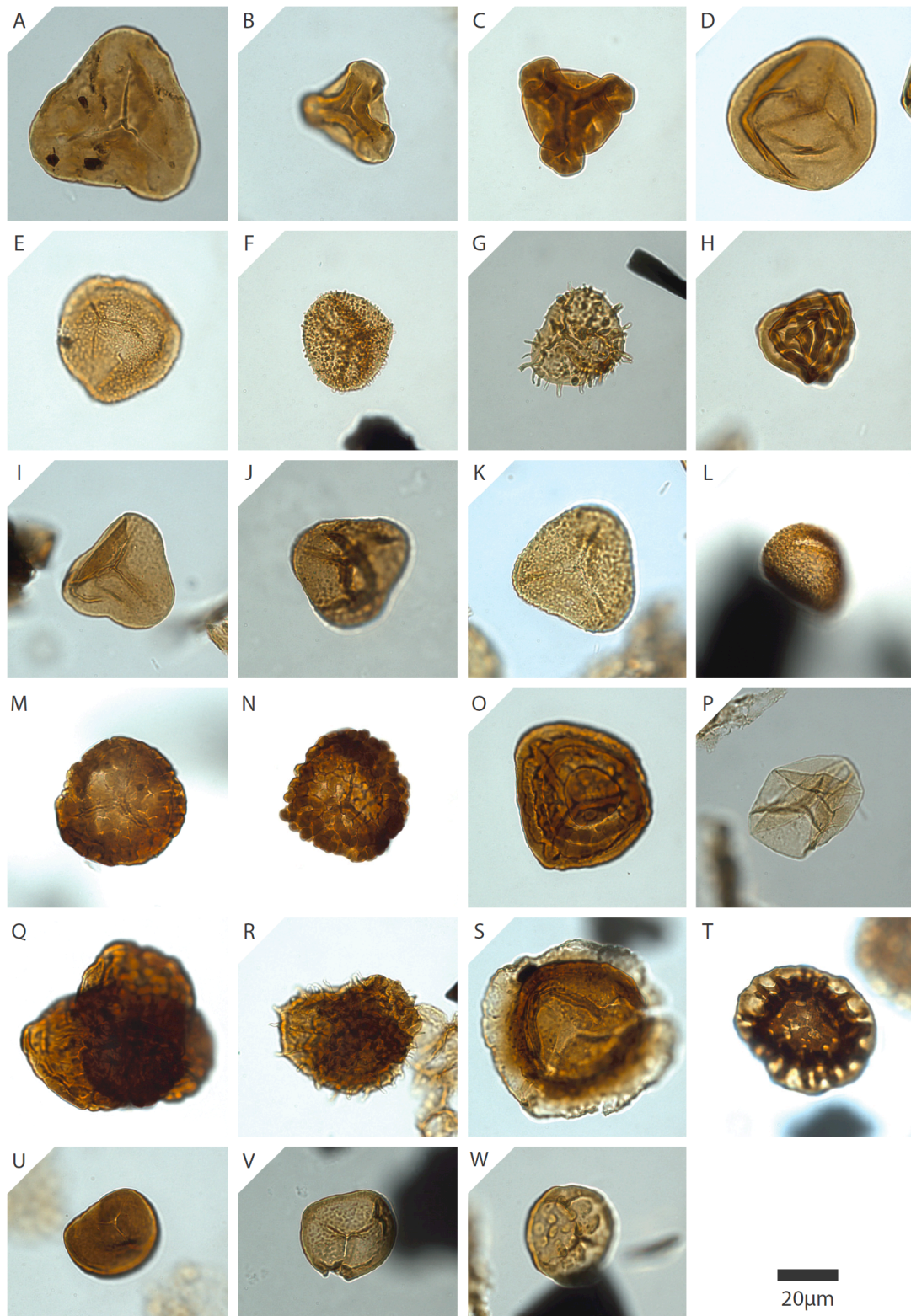


Plate 1. Spores encountered during this study. Information in brackets refers to specimen location as follows: (sample number-slide number-England finder coordinates-magnification-specimen number).

A–Deltoidospora toralis: UTSSA10-1-S68,3-1000-1

B–*Concavisporites* sp.: UTSSA19-1-W59,4-1000-1
C–*Concavisporites* A:-UTSSA7-1-L37,1-1000-1
D–*Punctatisporites globosus*: UTSSA19-1-Q62,2-1000-1
E–*Baculatisporites wellmanii*: UTSSA11-1-F42,4-1000-1
F–*Baculatisporites comaumensis*: UTSSA19-1-F36,4-1000-2
G–*Conbaculatisporites mesozoicus*: UTSSA19-1-R42-1000-1
H–*Contignisporites problematicus*: UTSSA19-1-G53-1000-2
I–*Trachysporites asper*: UTSSA19-1-V58,2-1000-1
J–*Trachysporites* cf. *sparsus*: LMPB6.2-1-M41,1-1000-2
K–*Trachysporites fuscus*: UTSSA19-1-J51-1000-2
L–*Polypodiisporites polymicroforatus*: LMPB3.1-1-S34,2-1000-2
M–*Uvaesporites reissingerii*: UTSSA8-1-G36-1000-2
N–*Uvaesporites reissingerii*: UTSSA8-2-V47,2-1000-1
O–*Neochomotriletes triangularis*: UTSSA11-1-J35,2-1000-2
P–*Calamospora tener*: UTSSA19-1-P44,4-1000-1
Q–Tetrad of *Uvaesporites reissingerii*: UTSSA11-1-F31,2-1000-2
R–*Heliosporites altmarkensis*: UTSSA19-C27,4-1000-1
S–*Cingulisporites rhaeticus*: UTSSA11-1-M40,2-1000-1
T–*Limbosporites lundbladii*: LMPB3.1-1-J64,3-1000-1
U–*Stereisporites stereoides*: UTSSA19-1-G51,2-1000-1
V–*Stereisporites seebergensis*: LMPB6.2-1-G34,1-1000-1
W–*Stereisporites cicatricosus*: UTSSA19-1-R64,1-1000-1

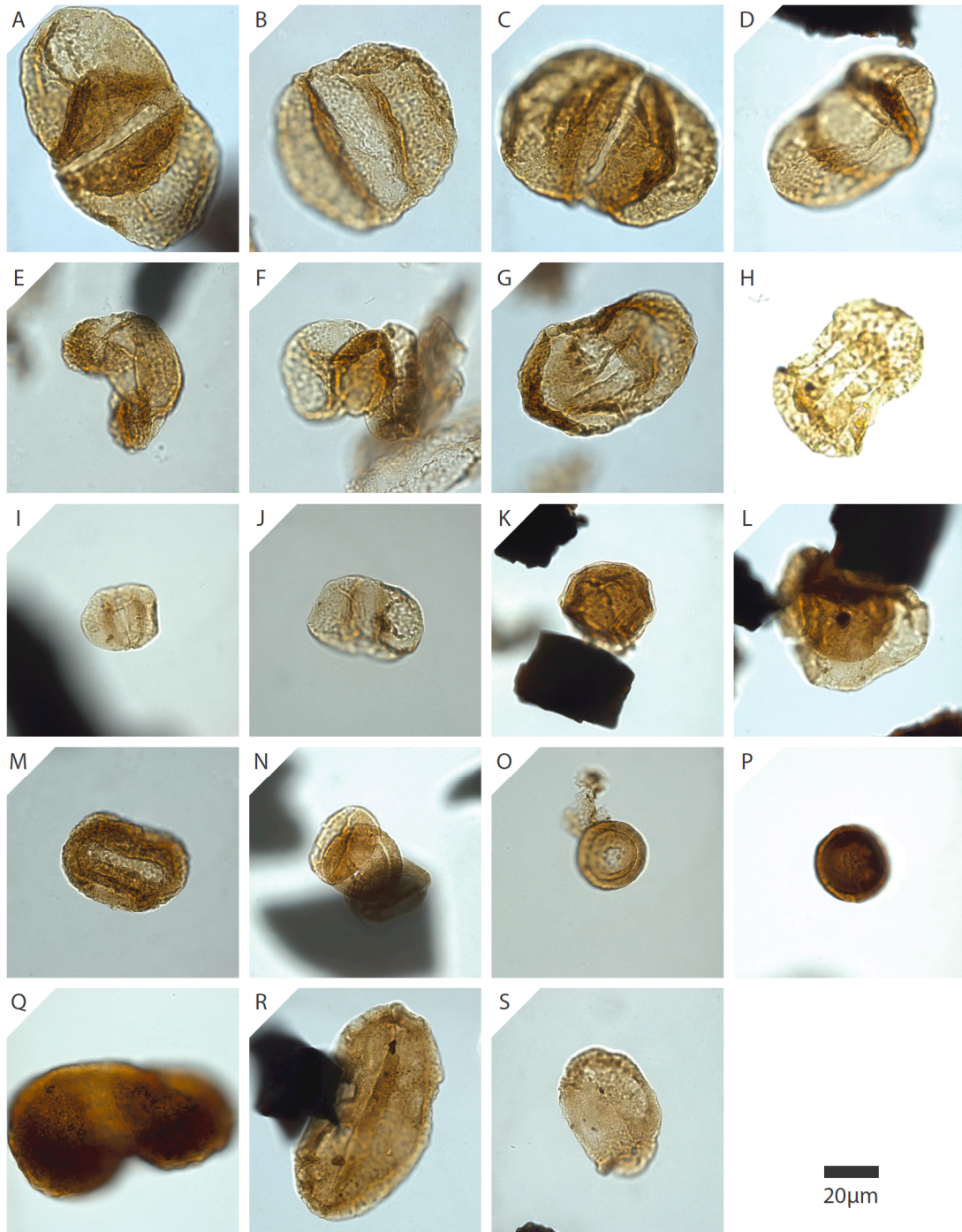


Plate 2. Pollen encountered during this study. Information in brackets refers to specimen location as follows: (sample number-slide number-England finder coordinates-magnification-specimen number).

A–*Alisporites radialis*: LMPB6.2-1-T62,2-1000-4

B–*Alisporites robustus*: LMPB6.2-1-R30-1000-2

C–*Alisporites* sp.: LMPB6.2-1-M54,1-1000-2

- D**–*Alisporites diaphanus*: LMPB6.2-1-G52-1000-1
- E**–*Pinuspollenites minimus*: LMPB6.2-1-G33,3-1000-1
- F**–*Pinuspollenites* cf. *pinoides*: UTSSA19-1-G59,1-1000-1
- G**–*Protohaploxypinus hercynicus*: LMPB6.2-1-V33,1-1000-1
- H**–*Lunatisporites rhaeticus*: UTSSA8
- I**–*Vitreisporites bjuvensis*: LMPB1.3-1-W48,1-1000-1
- J**–*Vitreisporites pallidus*: LMPB1.3-1-H55-1000-1
- K**–*Perinopollenites elatoides*: LMPB1.4-1-S37,4-1000-1
- L**–*Perinopollenites* cf. *elatoides*: USSA21-2-L35-1000-1
- M**–*Quadraeculina anaellaeformis*: LMPB6.2-1-P43-1000-1
- N**–Tetrad of *Classopollis classoides*: UTSSA1-2-J46-1000-1
- O**–*Classopollis classoides*: UTSSA19-1-O58,2-1000-2
- P**–*Classopollis meyeriana*: LMPB2.3-1-U53-1000-2
- Q**–*Vesicaspora fuscus*: UTSSA11-1-T29,2-1000-1
- R**–*Ovalipollis ovalis*: UTSSA10-1-D56-1000-1
- S**–*Ovalipollis breviformis*: UTSSA8-2-N38-1000-1

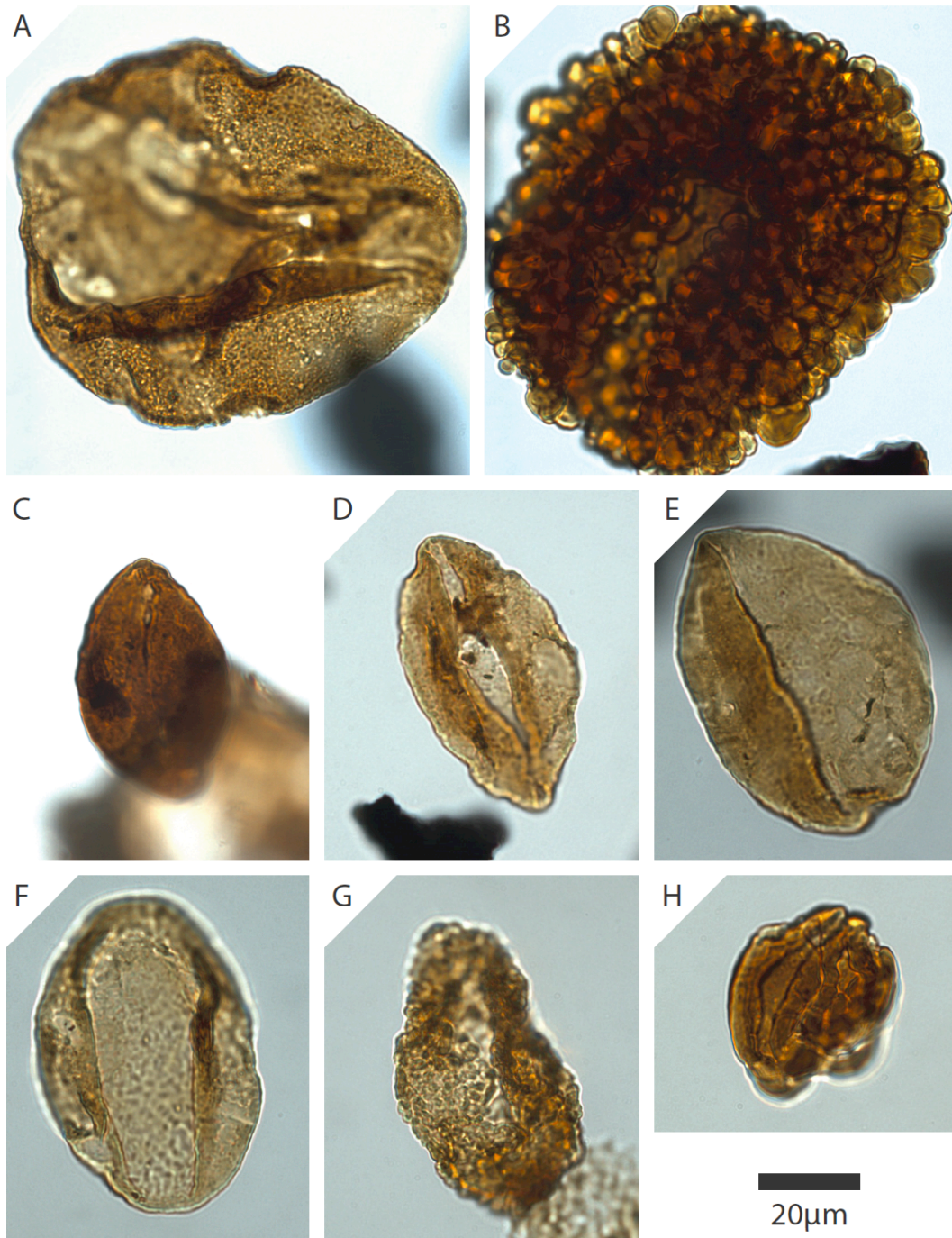


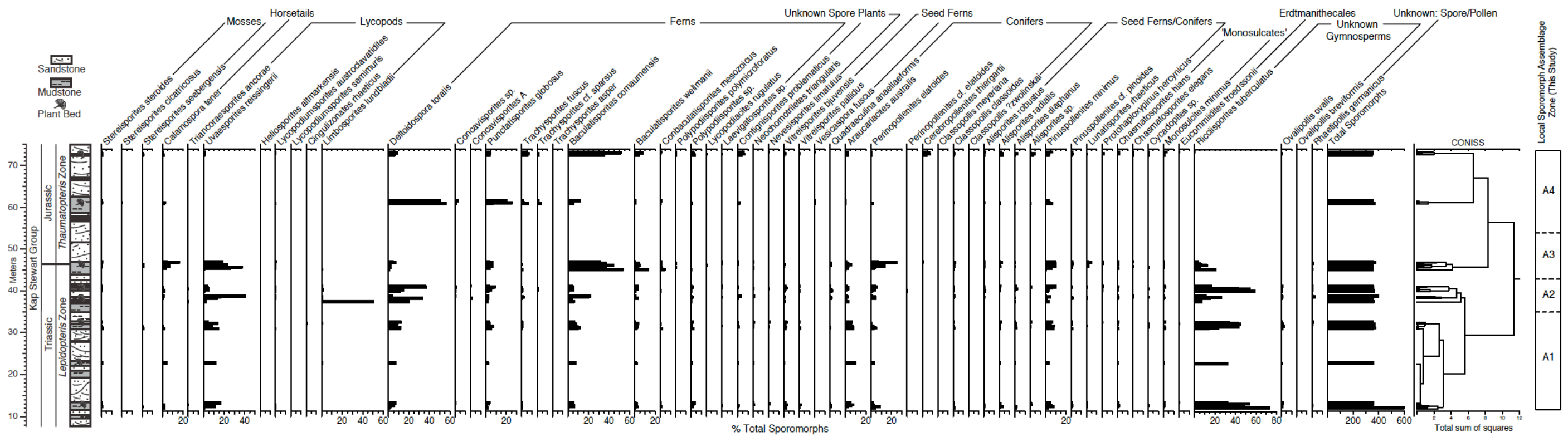
Plate 3. Pollen encountered during this study. Information in brackets refers to specimen location as follows: (sample number-slide number-England finder coordinates-magnification-specimen number).

A–*Araucariacites australis*: LMPB2.3-1-T41,3-1000-2

B–*Ricciisporites tuberculatus*: LMPB1.3-1-E53,2-1000-1

C–*Cycadopites* sp.: UTSSA9-1-O65,2-1000-1

- D**–*Monosulcites minimus*: UTSSA10-1-W55,1-1000-2
- E**–*Chasmatosporites elegans*: LMPB1.3-1-F47,3-1000-1
- F**–*Chasmatosporites hians*: UTSSA1-2-K37,3-1000-4
- G**–*Cerebropollenites thiergartii*: UTSSA19-1-Q56,4-1000-1
- H**–*Rhaetipollis germanicus*: UTSSA10-1-D38,4-1000-1



Pollen diagram showing the percentage of sporomorphs in each of the plant beds at Astartekløft analyzed here. Data from plant beds shown at 3x vertical exaggeration. CONISS stratigraphically constrained cluster analysis (Grimm 1987) used to delineate each local sporomorph assemblage zone. Schematic sedimentary log of the Astartekløft section adapted from McElwain *et al.* (2007). Plant beds are numbered 1–7 and highlighted by schematic *Ginkgo* leaves.